



A fleet ready and waiting for your offshore and harbour towage

Welshman

Call Sign/IMO	MXNS5 / 9178020
Built	01/1998, Japan
LOA	29.06m
Breadth	9.0m
Draft	3.7m
Speed	13.3Knts
Bollard Pull	50 Tonnes
GT & NT	GT: 292 / NT: 87
Class	Lloyds 100 A1 Tug
M/Engs	2 x Niigata 6L25HX. 3,600 BHP @ 900 RPM
Propulsion	2 x Niigata ZP-21FR Azimuth Stern Drive Units
Aux Engines	2 x Yanmar 6HALN
Fire Fighting	2 x Kashiwa monitors for both water and foam, 720m ³ /h each
Electronics	2 x Sailor VHF, Autopilot: Tokimec SN3171, Sat Compass: Furuno SC-50", Radar: 2 x Furuno FR-1942, GPS: Koden HGP98D, Navtex, AIS
Tank Capacities	Fuel Oil: 120m ³ , Fresh Water: 30m ³ , Dispersant Tank: 11m ³
Aft Towing Winch	Electro-hydraulic single drum winch with single warping head and scrolling gear. Recovery: 24m/min @ 10T or 6m/min @ 40T, Brake: 80T, Capacity: 750m x 44 mm dia. wires
Forward Winch	2 x Electro-hydraulic Masada single drum winches with double warping heads and double gypsies. Recovery: 35m/min @ 1.5T or 75m/min @ 1.0T, Brake: 60T, Capacity: 150m x 88mm dia. P.P.Rope
Spare Wire	1 x 750m x 44mm wire
Deck Equipment	Crane: 1 x Nanse PC-253XG-D50 extending boom. Outreach, 0.95mt @ 4m / 0.49mt @ 6.5m. FRC: 1 x DSB rescue craft, complete with 25 BHP Mercury outboard
Accommodation	2 x single berth cabins, 1 x 4 berth cabin. The Wheelhouse and Messroom are fully air conditioned

SMS Towage Limited

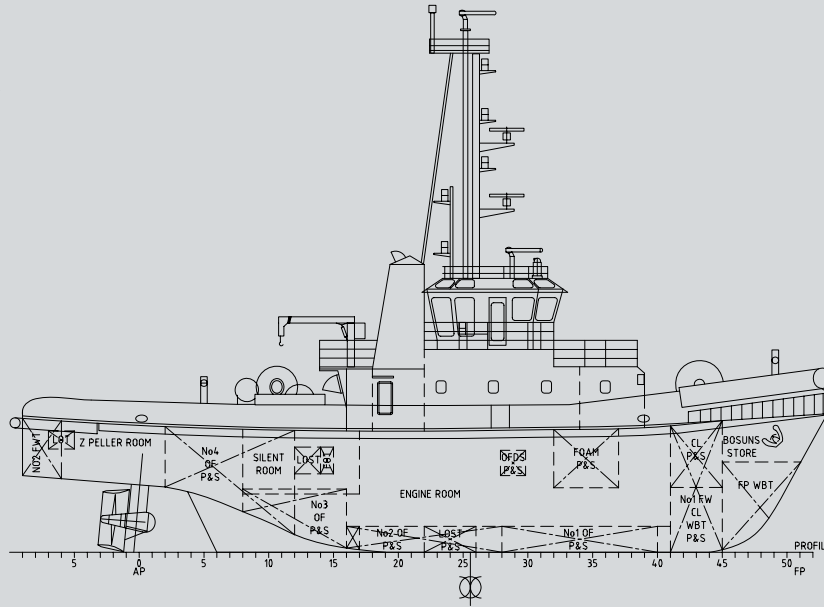
Ocean House, Waterside Park,
Livingstone Road, Hessle,
East Yorkshire, England. HU13 0EG

Fax: +44 (0)1482 648 284
Email: info@smstowage.com
www.smstowage.com

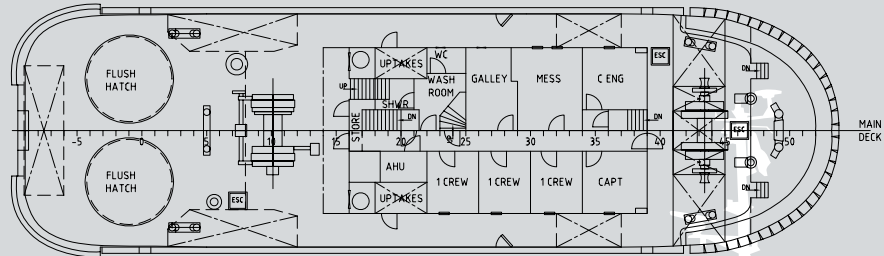
Humber: +44 (0)1482 350 999 Bristol: +44 (0)1633 920 920 Belfast: +44 (0)28 9018 3333

Welshman

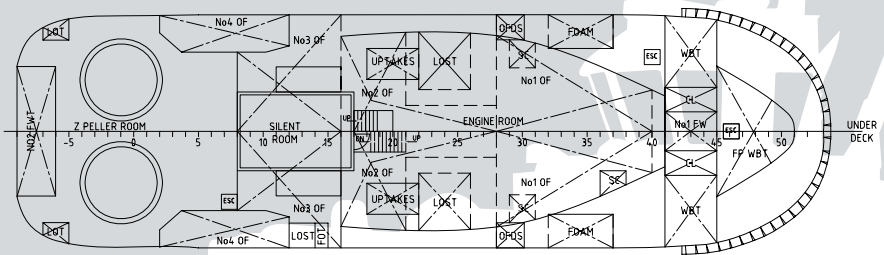
Side Profile



Main Deck



Lower Deck



SMS Towage Limited

Ocean House, Waterside Park,
Livingstone Road, Hessele,
East Yorkshire, England. HU13 0EG

Fax: +44 (0)1482 648 284
Email: info@smstowage.com
www.smstowage.com