



A fleet ready and waiting for your offshore and harbour towage

Tradesman

Call Sign/IMO	2BNO7 / 8704274
Built	07/1987, Imamura Shipbuilding Co.Ltd, Kure, Japan
LOA	22.60m
Breadth	8.50m
Draft	3.50m
Speed	11.8Knts
Bollard Pull	35 Tonnes
GT & NT	131.57 / 53.06
Class	Lloyds 100 A1 Tug
M/Engs	2 x Niigata 6L25CXE, 2,600 BHP @ 720 RPM
Propulsion	2 x Niigata ZP-2A Z-peller Azimuth Stern Drive Units with slipping clutches
Aux Engines	2 x 64 kw 380V, 50 hz alternators driven by Yanmar 6CHL-HTN diesel engines
Rubber Fending System	Heavy duty fendering of both horizontal and vertical type with water lubrication on bow. Vertical stem fender and horizontal side fender systems
Electronics	2 x Sailor VHF, Radar: Furuno FR8030D, 12" x 48 miles, Echo Sounder: JRC Colour Echo sounder model, JFV 100M2, Fluxgate Compass, MD53 with dial repeater, Sestrel Minor overhead compass, AIS
Tank Capacities	Fresh Water: 35m ³
Forward Winch	Electro-hydraulic single drum with double warping heads and double gypsies. Recovery: 25m/min @ 2T or 65m/min @ 1T, Brake 60 T. Fitted with 110m of 85mm supermix rope
Towing Hook	40 T SWL tted aft of the deckhouse with local and remotely controlled quick release device
Deck Equipment	Windlass: 2 x Electro hydraulic 2 T @ 10m/min windlasses with 2 x 300 kg anchors each with 151m x 22mm chain. Cargo Capacity: 20T
Accommodation	4 Berths. Air Conditioned. Accommodation space is arranged in the deckhouse on the Main Deck level with toilet, shower and laundry facilities

SMS Towage Limited

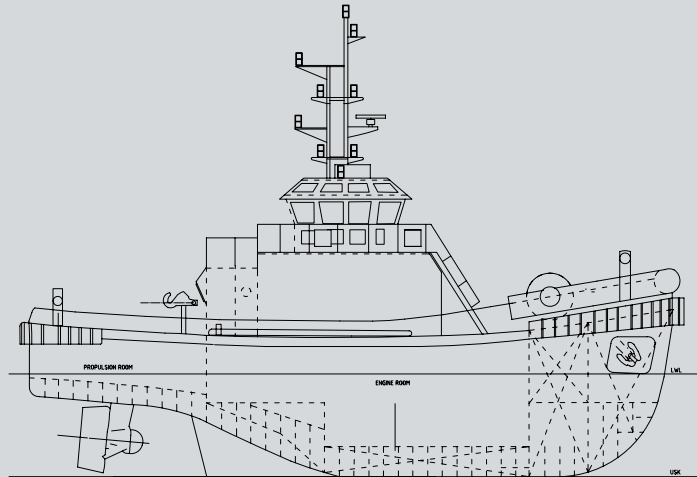
Ocean House, Waterside Park,
Livingstone Road, Hessle,
East Yorkshire, England. HU13 0EG

Fax: +44 (0)1482 648 284
Email: info@smstowage.com
www.smstowage.com

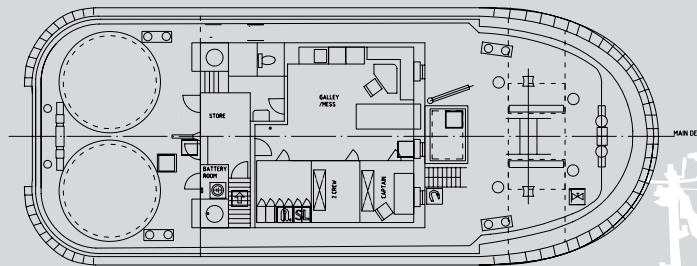
Humber: +44 (0)1482 350 999 Bristol: +44 (0)1633 920 920 Belfast: +44 (0)28 9018 3333

Tradesman

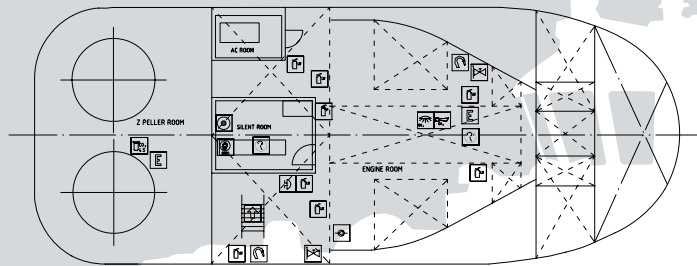
Side Profile



Main Deck



Wheel House



SMS Towage Limited

Ocean House, Waterside Park,
Livingstone Road, Hessle,
East Yorkshire, England. HU13 0EG

Fax: +44 (0)1482 648 284
Email: info@smstowage.com
www.smstowage.com