



KINGSMAN

> General

Call Sign: MMYT9

IMO: 9889021

MMSI: 232045118

Year Built: 2021

Location Built: Turkey

> Particulars

LOA: 22.40m

Beam: 10.84m

Depth: 4.40m

Draft (Max): 4.55m

Bollard Pull: 53.80 T

> Engine

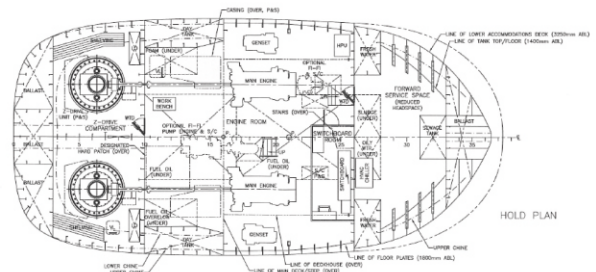
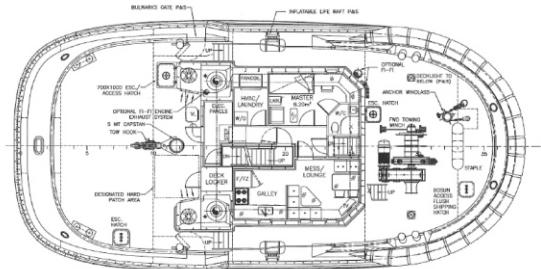
Main Engines: Caterpillar 3512 C

Main Engine Power: 2 x 1,500 kW @ 1600 rpm

Auxiliary Engines: Caterpillar C4.4 DITA

Auxiliary Engine Power: 2 x 125.5Hp - 93.6 kW, 1500RPM

Fire Fighting: Type: SFP 250X350 XPC- Q: 1350 m³/h³



Accuracy of information provided is not guaranteed

info@smstowage.com | smstowage.com | +44 (0) 1482 350 999